

**BEAVERTON HIGH SCHOOL
REPLACEMENT - PORTABLES**

BEAVERTON SCHOOL DISTRICT
T 503-356-4600

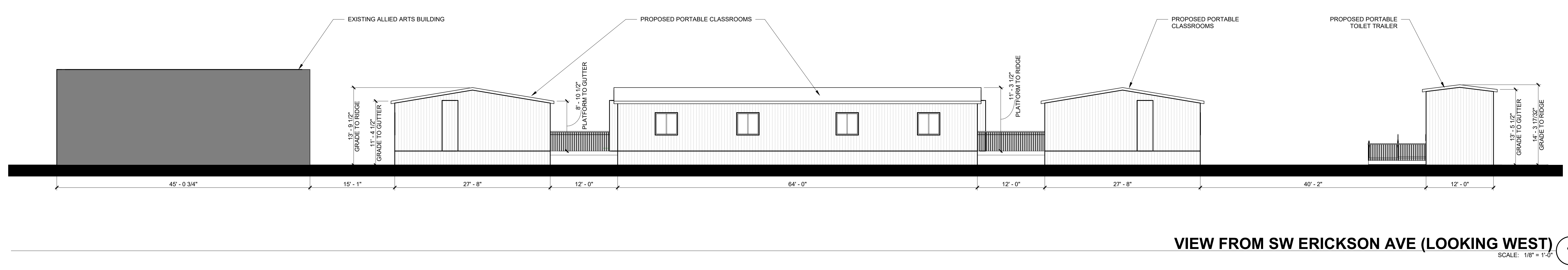
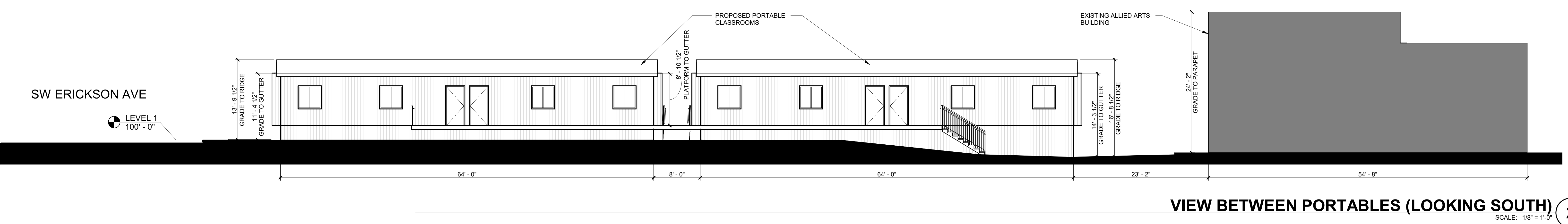
NOT FOR CONSTRUCTION

date	revisions

phase	DD
date	2/26/2023
project	21016

BUILDING ELEVATIONS

FS-2



2/26/2023 12:02:19 PM
Autodesk Docs/21016 Beavertron HS Ph 2/BHS_Modulars_v22.rvt

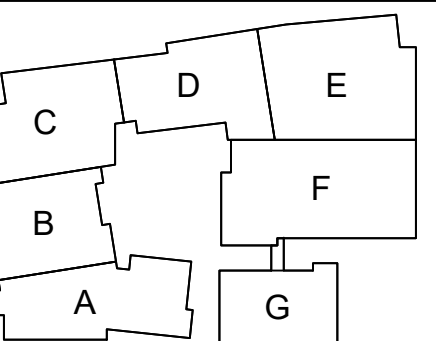
SW ERICKSON AVE
LEVEL 1
100'-0"



NEW BEAVERTON HIGH SCHOOL
13000 SW 2ND STREET, BEAVERTON OR 97005

BEAVERTON SCHOOL DISTRICT
T 503-356-4500

PRELIMINARY
NOT FOR
CONSTRUCTION



date revisions

date	revisions

phase SD
date 11/28/2022
project 21016

EXISTING CONDITIONS

C1.02

SHEET LEGEND

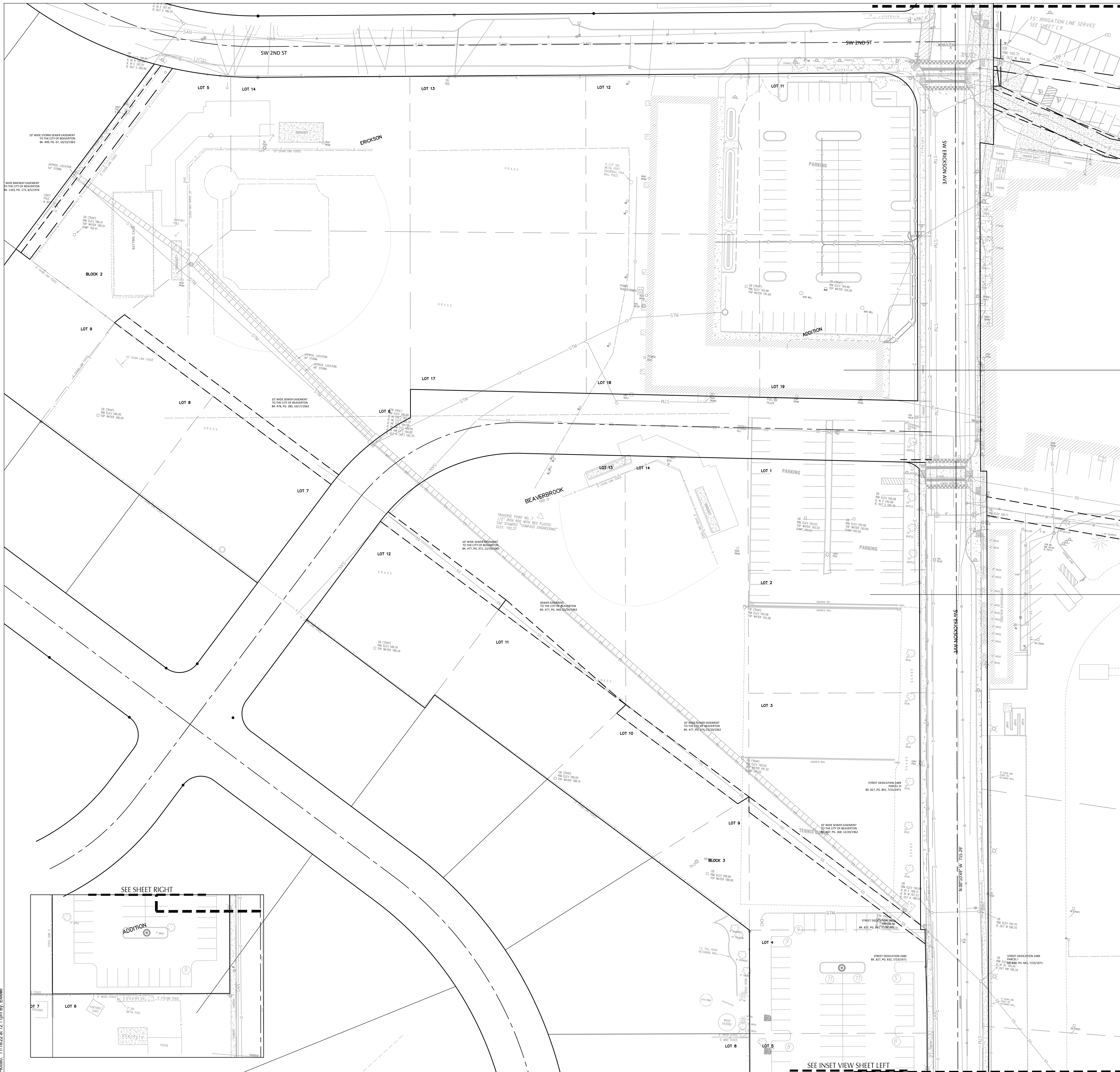
- SAN - COMBINED SEWER LINE
 - W - UNDERGROUND WATER LINE
 - E - UNDERGROUND ELECTRICAL LINE
 - G - UNDERGROUND GAS LINE
 - T - UNDERGROUND TELEPHONE LINE
 - FO - UNDERGROUND TELEPHONE DUCT
 - OE - OVERHEAD ELECTRICAL LINE
 - O - CHAINLINK FENCE
 - - WOOD FENCE
 - ◻ - UNDERGROUND STREET LIGHT
-
- EXISTING CONCRETE SURFACE
 - EXISTING ASPHALT PAVING
 - EXISTING BRICK
-
- WATER METER
 - FIRE HYDRANT
 - WATER VALVE
 - BOLLARD
 - CATCH BASIN
 - POWER METER
 - SIGN
 - COMBINED SEWER MANHOLE
 - STORM SEWER MANHOLE
 - TELEPHONE MANHOLE
 - CUY WIRE
 - POWER POLE
 - POWER POLE WITH UNDERGROUND
 - LIGHT POLE
 - GAS VALVE
 - GAS METER
 - PHONE BOOTH
 - BUSH
 - DECIDUOUS TREE
 - CONIFEROUS TREE
 - FIRE DEPARTMENT CONNECTION

STORM SEWER NOTES

- 1 AREA DRAIN - OIL TRAP (E)
RIM ELEV. = 196.92'
- 2 AREA DRAIN - OIL TRAP (E)
RIM ELEV. = 196.90'
- 3 AREA DRAIN - OIL TRAP (S)
RIM ELEV. = 196.68'
- 4 AREA DRAIN
RIM ELEV. = 195.29'
- 5 AREA DRAIN - OIL TRAP (E)
RIM ELEV. = 191.73'
- 6 AREA DRAIN - OIL TRAP (E)
RIM ELEV. = 194.35'
I.E. (N) = 192.85" (6" CONC)
- 7 AREA DRAIN - OIL TRAP (W)
RIM ELEV. = 193.54'
- 8 AREA DRAIN - OIL TRAP (E)
RIM ELEV. = 194.57'
- 9 AREA DRAIN - OIL TRAP (N)
RIM ELEV. = 194.44'
- 10 TRENCH DRAIN
- 11 AREA DRAIN - OIL TRAP
RIM ELEV. = 195.62'
- 12 AREA DRAIN - OIL TRAP (N) AND (W)
RIM ELEV. = 196.26"
- 13 AREA DRAIN - OIL TRAP (E)
RIM ELEV. = 191.60'
- 14 AREA DRAIN - OIL TRAP (S)
RIM ELEV. = 193.67'
- 15 AREA DRAIN
RIM ELEV. = 195.29'
- 16 CATCH BASIN - OIL TRAP (E)
RIM ELEV. = 193.66"
I.E. (W) = 191.81" (6" CONC)

MATCHLINE SEE SHEET C1.01

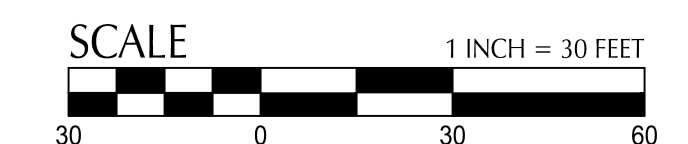
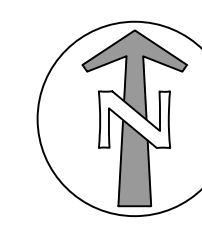
MATCHLINE SEE SHEET C1.03

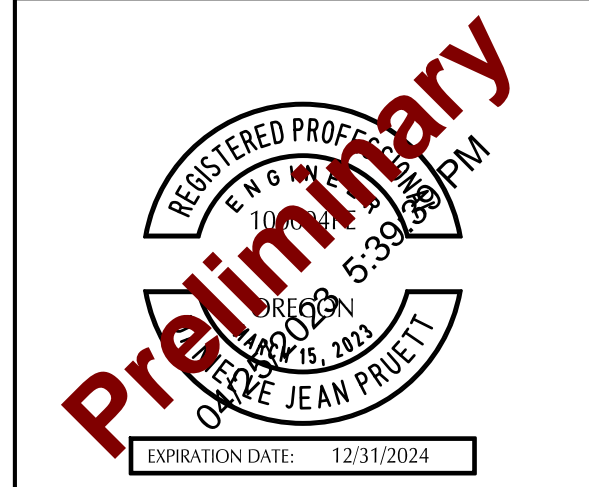


File: \\chp\as1\civil\projects\2021\12\01\70-BSD-Beaverton-HS\CADD\LOTS\SD\C1.02\1178-C1-1-EX.dwg TAB: C1.02
Plot: 11/18/22 at 12:11pm By: EMalik

SEE SHEET RIGHT

SEE INSET VIEW SHEET LEFT





SHEET NOTES

- PIPE BEDDING AND BACKFILL FOR ALL UTILITIES SHALL BE DONE PER DETAIL 300/C2.1
- STRUCTURES LOCATIONS ARE BASED ON CENTER OF STRUCTURE.
- REFERENCE ELECTRICAL PLANS AND PGE STANDARDS FOR ELECTRICAL EQUIPMENT AND INSTALLATION REQUIREMENTS.

KEY NOTES

- NOTE** **DESCRIPTION**
- INSTALL CITY STANDARD CLEANOUT PER DETAIL 340/C2.1.
 - EXTEND LATERAL AND PROVIDE PIPE AND FITTINGS AS REQUIRED TO MAKE CONNECTION TO UTILITY STUB PROVIDED WITH PORTABLE RESTROOM. COORDINATE PLUMBING INSPECTIONS WITH CITY AS REQUIRED.
 - UTILITY CROSSING. PROVIDE 18" MIN. CLEARANCE, U.N.O.

UTILITY LABEL LEGEND

STRUCTURE LABEL

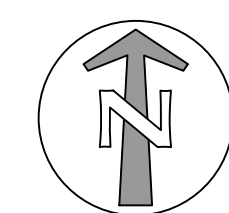
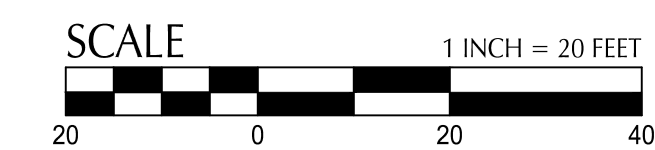
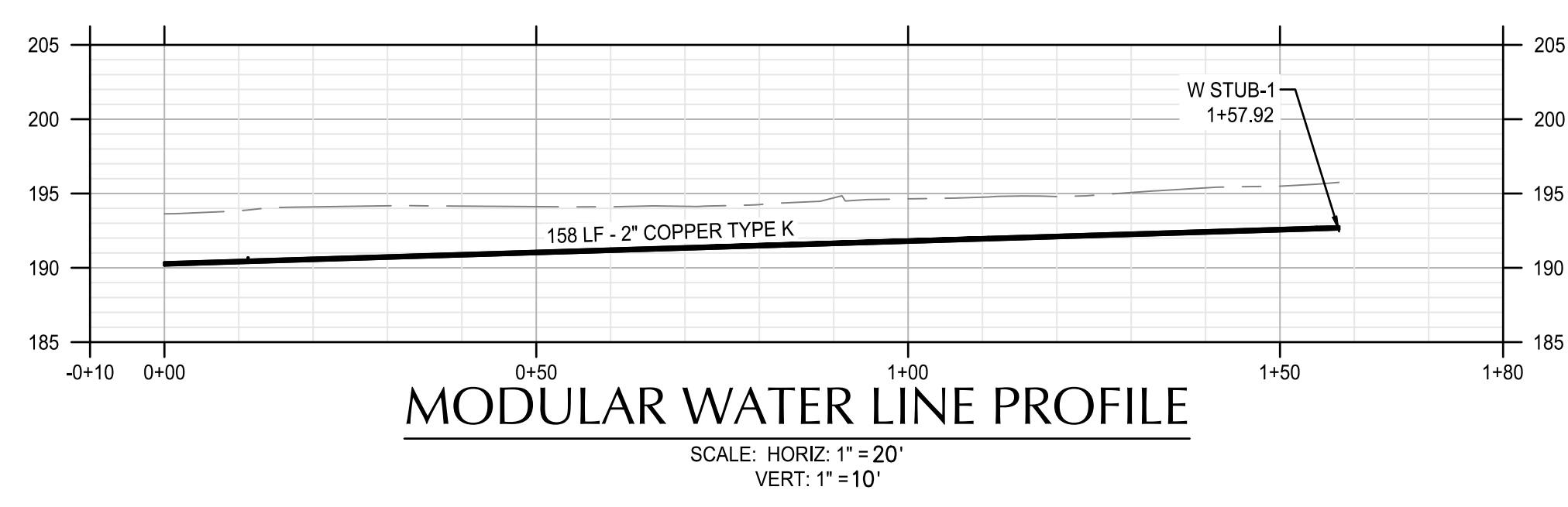
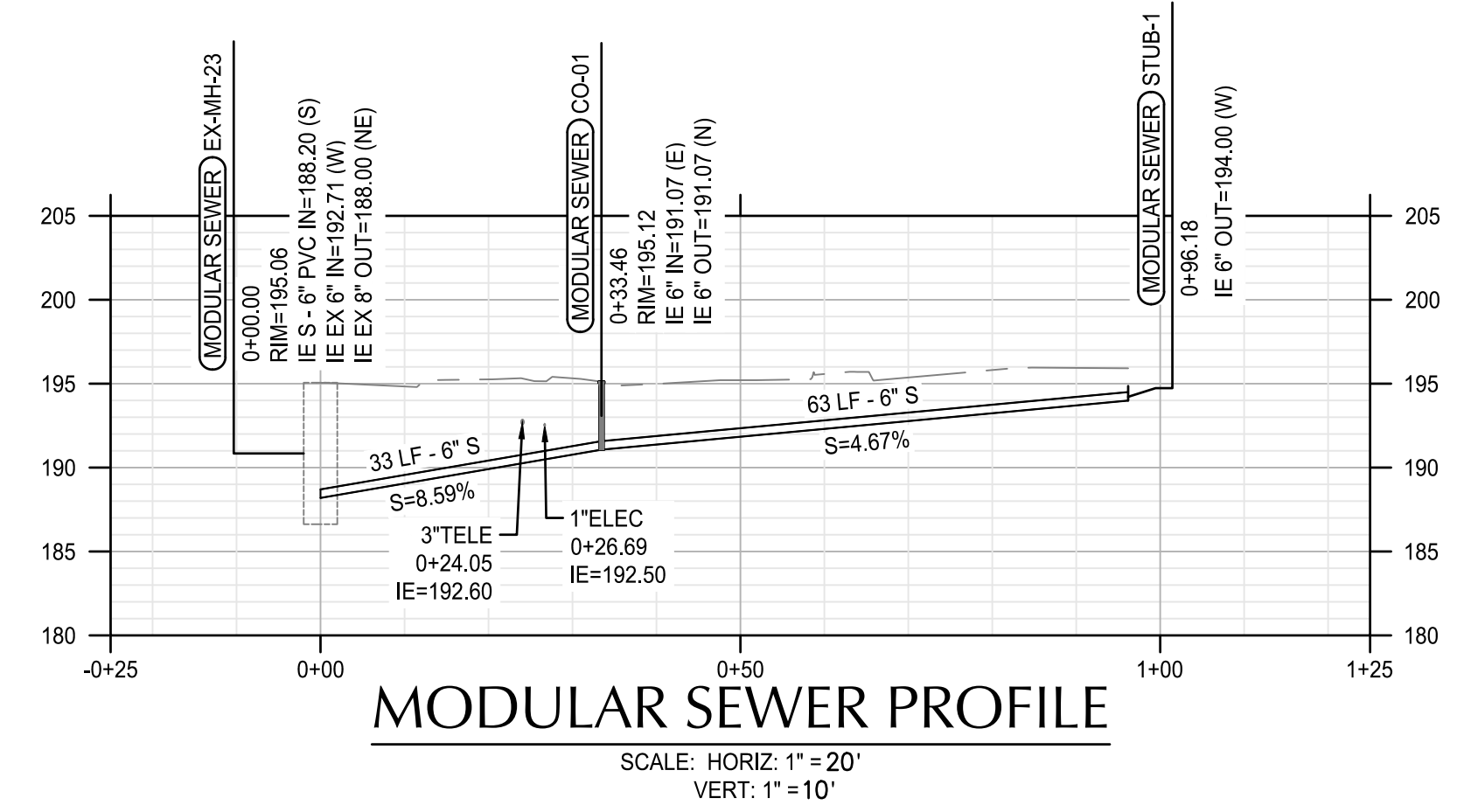
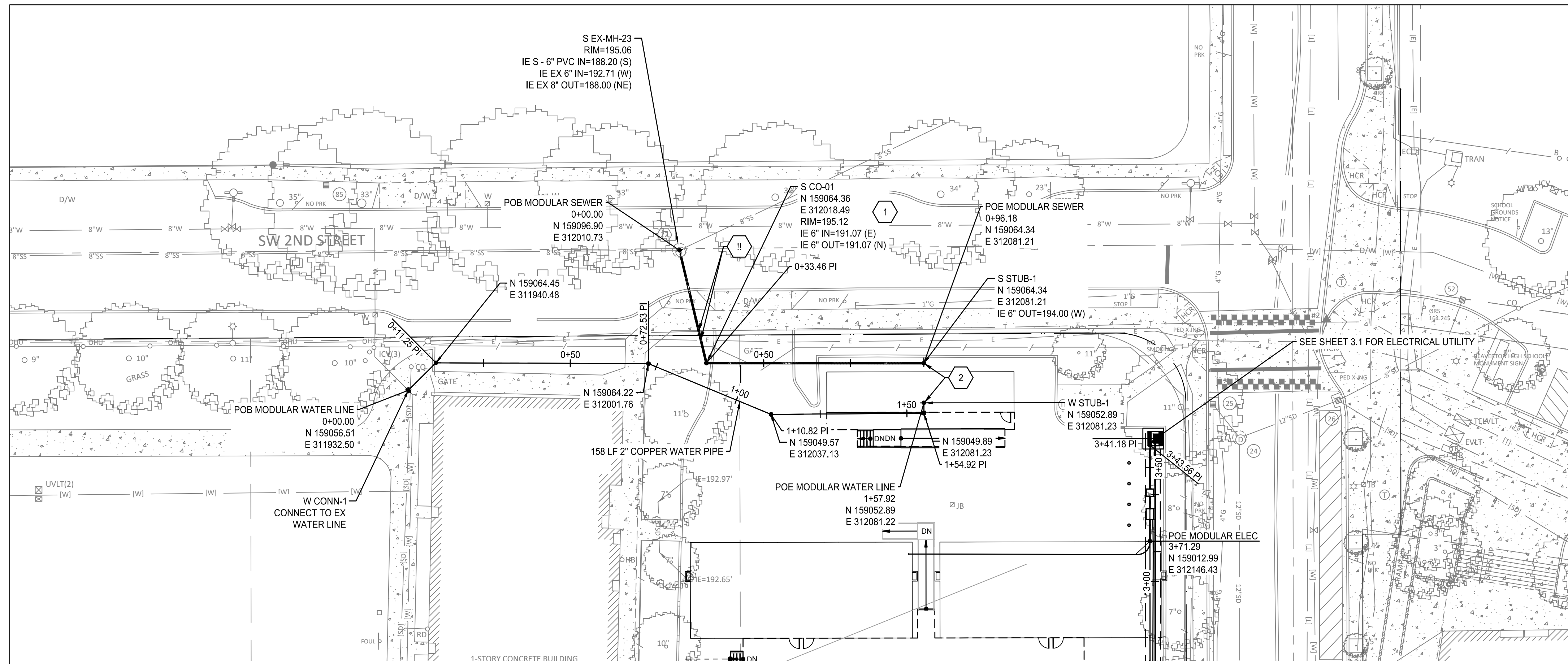
UTILITY TYPE (S=SANITARY SEWER, W=WATER, FP=FIRE PROTECTION)
 STRUCTURE TYPE CALLOUT
 XX XX-XX ← ID NUMBER (WHERE APPLICABLE)
 X+XX.X RT X.X' ← LOCATION (WHERE APPLICABLE)
 RIM= ← RIM ELEVATION
 IE IN = XX.X ← STRUCTURE INFO (WHERE APPLICABLE)
 IE OUT = XXX

PIPE LABEL

UTILITY LENGTH
 UTILITY SIZE
 UTILITY TYPE
 XXLF - XX" XX
 S=X.XX% ← SLOPE (WHERE APPLICABLE)

STRUCTURE TYPE

CALLOUT	DESCRIPTION	DETAIL REF.
CO	CLEANOUT TO GRADE	340/C2.1
MH	MANHOLE	
STUB	STUB	SEE PLUMBING FOR MODULAR CONNECTION DETAILS

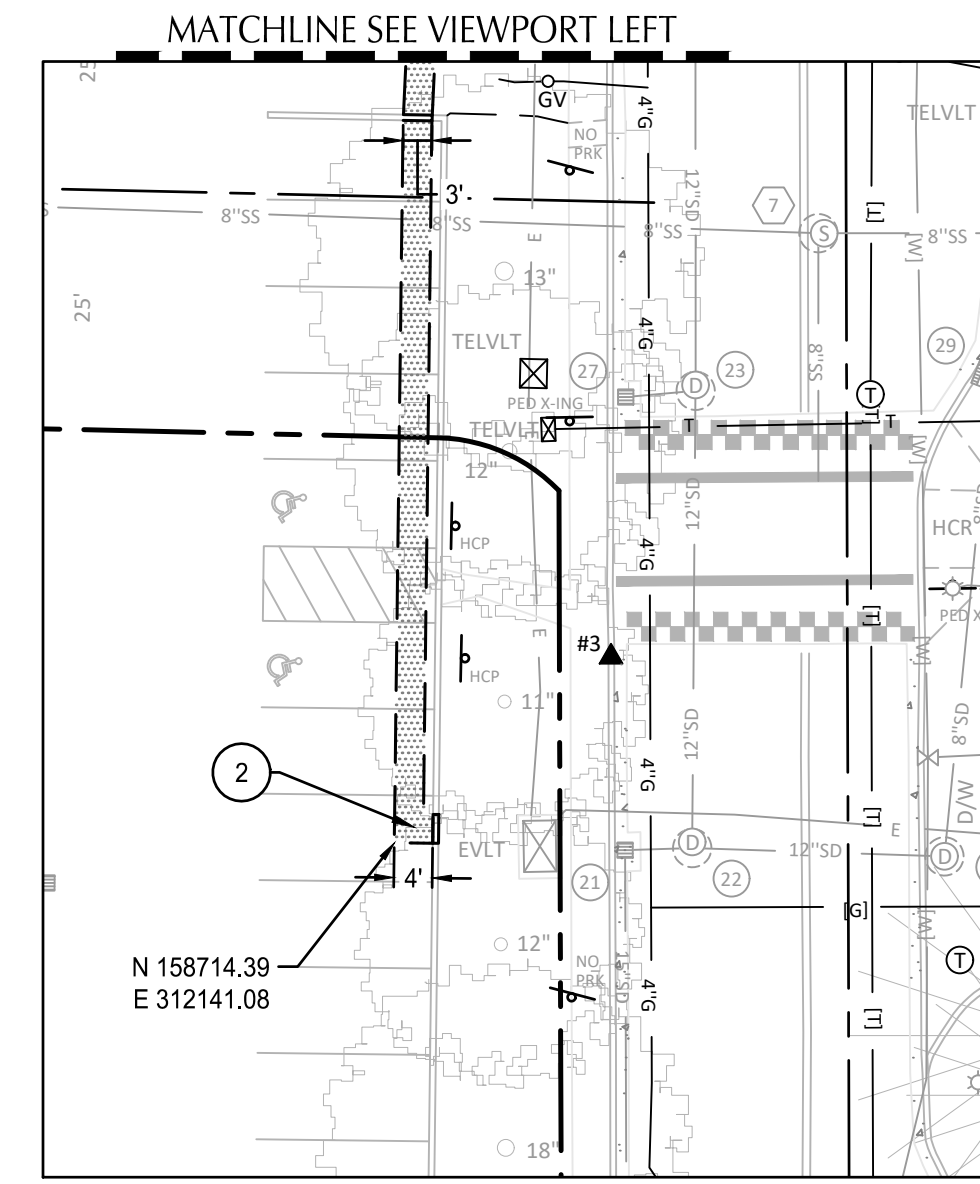
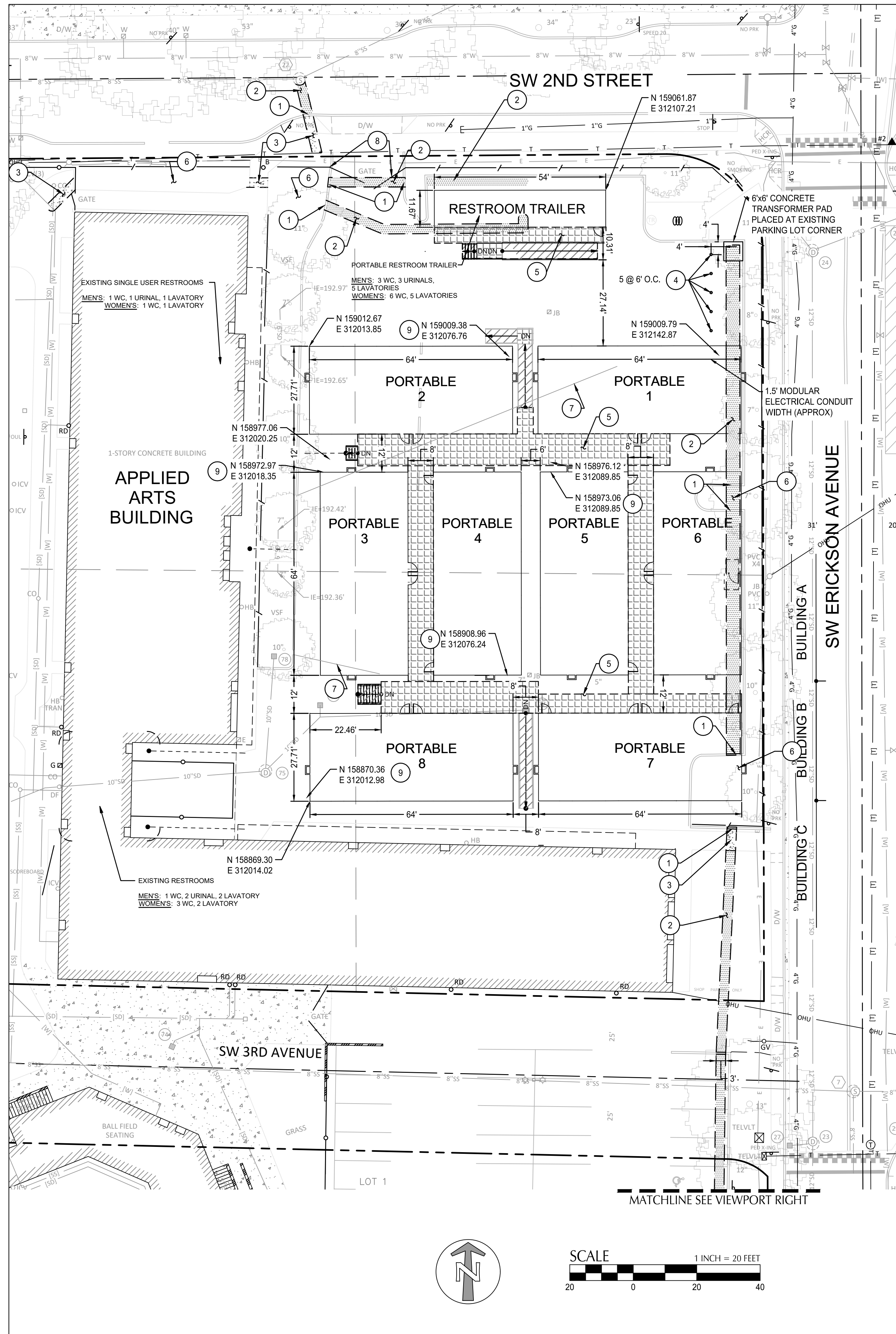


revisions

phase	PERMIT
date	4/24/2023
project	21016

UTILITY PLAN & PROFILE

C3.0



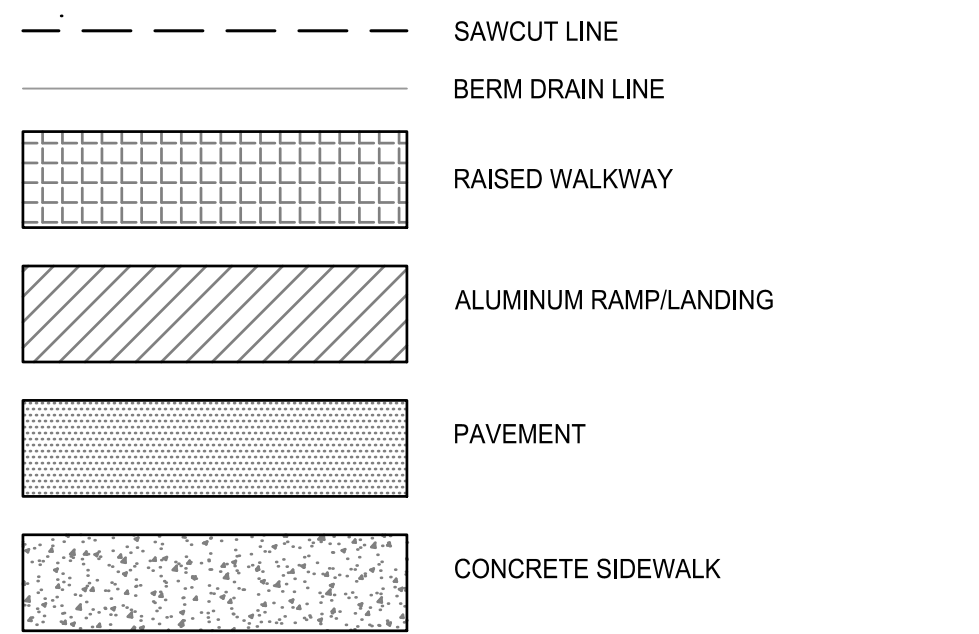
SHEET NOTES

- ALL DIMENSIONS ARE TO FACE OF CURB OR FACE OF WALL.
- PARKING LOT STRIPING NOT SHOWN FOR CLARITY. STRIPING TO REMAIN.
- REPLACE ALL PAVEMENT, CURBS, DRIVEWAYS, SIDEWALKS, AND LANDSCAPING TO SURROUNDING GRADE

KEY NOTES

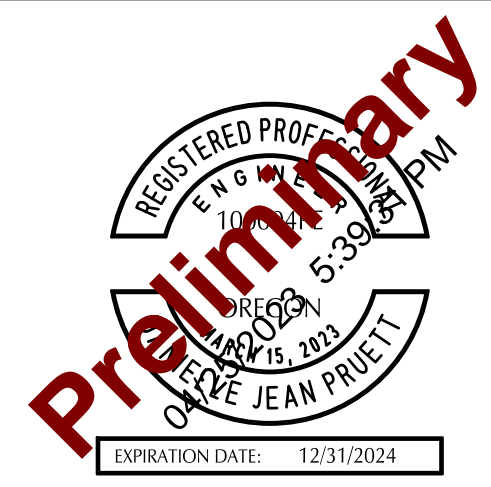
#	DESCRIPTION	DETAIL REF.
1	REPLACE CURB	1/C2.0
2	REPLACE PAVEMENT	2/C2.0
3	REPLACE CONCRETE SIDEWALK	3/C2.0
4	INSTALL NEW 6" BOLLARD	4/C2.0
5	SEE ARCHITECTURAL PLANS FOR MORE INFORMATION ON RAISED WALKWAYS, ACCESS STEPS, HANDRAILS AND RAMPS	
6	REPLACE LANDSCAPING.	
7	ASPHALT BERM. SEE C4.0 FOR MORE INFORMATION	
8	REMOVE GATE AND/OR FENCE. SAVE GATE FOR LATER	
9	APPROXIMATE TERMINATION OF ELECTRICAL CONDUIT HUNG BELOW MODULARS	

SHEET LEGEND



BEAVERTON HIGH SCHOOL REPLACEMENT - PORTABLES
13000 SW 2ND STREET
BEAVERTON, OREGON 97005

BEAVERTON SCHOOL DISTRICT
T 503-356-4500



revisions	

phase PERMIT
date 4/24/2023
project 21016
MODULAR SITE IMPROVEMENT & HORIZONTAL CONTROL PLAN

C1.0



SHEET KEYNOTES

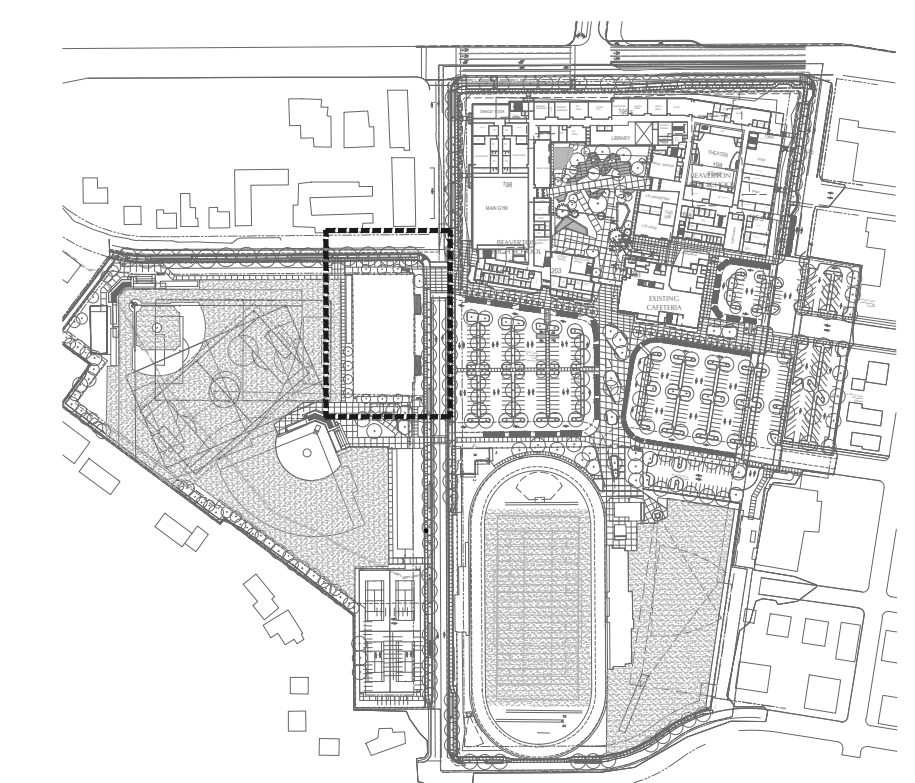
- 1 PROVIDE 6'x6' UTILITY TRANSFORMER PAD PER UTILITY REQUIREMENTS.
- 2 PROVIDE METAL SUPPORTING FRAMING RACK FOR UTILITY METER, CT CABINET AND ELECTRICAL MAIN PANELBOARD (2MDS). SEE DETAIL 2/EP2.01.
- 3 PROVIDE CONNECTION TO PORTABLE BUILDING ELECTRICAL PANEL. VERIFY LOCATION OF ELECTRICAL PANEL IN EACH PORTABLE BUILDING.
- 4 PREFERRED CONDUIT ROUTING. PROVIDE BLOCKING TO SUPPORT CONDUITS BETWEEN PORTABLE BUILDINGS. TYPICAL. SEE SINGLE LINE DIAGRAM FOR QUANTITY OF FEEDERS. PROVIDE TRENCHING.
- 5 PREFERRED CONDUIT ROUTING. ROUTE CONDUIT UNDERSIDE OF PORTABLE BUILDING. CONDUITS TO BE SUPPORTED FROM UNDERSIDE OF PORTABLE BUILDING. TYPICAL. SEE SINGLE LINE DIAGRAM FOR QUANTITY OF FEEDERS.
- 6 DISCONNECT EXISTING EXTERIOR LUMINAIRE. CONNECT NEW LUMINAIRE TYPE 'SA' TO SAME LOCATION AS REMOVED LUMINAIRE.
- 7 CONNECT LUMINAIRE TO EXISTING 'SA' LIGHTING CIRCUIT IN ADJACENT PORTABLE.
- 8 PROVIDE TRENCHING, PATCH AND REPAIR. AVOID TREES. TREES WILL NOT BE REMOVED. DO NOT ROUTE IN LANDSCAPE AREAS. ROUTE VIA PARKING AREAS.

Incoming Electrical Service		
Division of Responsibility		
	Contractor	Utility
Primary Conduit	X	
Primary Conductors		X
Trenching and Backfill	X	
Transformer		X
Transformer Pad / Vault	X	
Bollards	X	
Transformer Connections		X
Secondary Conduit	X	
Secondary Conductors		X
C/T Enclosure	X	
C/T's		X
Meter Base	X	
Meter		X
Electric Room Door Lock Box (obtain from power company)	X	
Reported Fault Current at Transformer:		N/A

Contractor: Power Utility:
 Jim Krueger
 Portland General Electric
 Phone: (503) 672-5464
 Email: James.Krueger@pge.com
 Work Order #: M3318861

Notes:
 1. Contact and coordinate all requirements and responsibilities with serving utility companies prior to submitting bid.
 2. All service installation work shall be in strict compliance with the requirements of the serving utilities.

Disclaimer: Interface Engineering, Inc. has contacted the utilities but has not received in writing the final requirements from the [power utility] [telecommunications utility #1] [telecommunications utility #2]. These drawings indicate our best estimation of their requirements. [Prior to bid] [Prior to any construction] contact the utilities and obtain in writing their requirements.



KEY PLAN



BEAVERTON HIGH SCHOOL REPLACEMENT - PORTABLES

13000 SW 2ND STREET
BEAVERTON, OREGON 97005

BEAVERTON SCHOOL DISTRICT

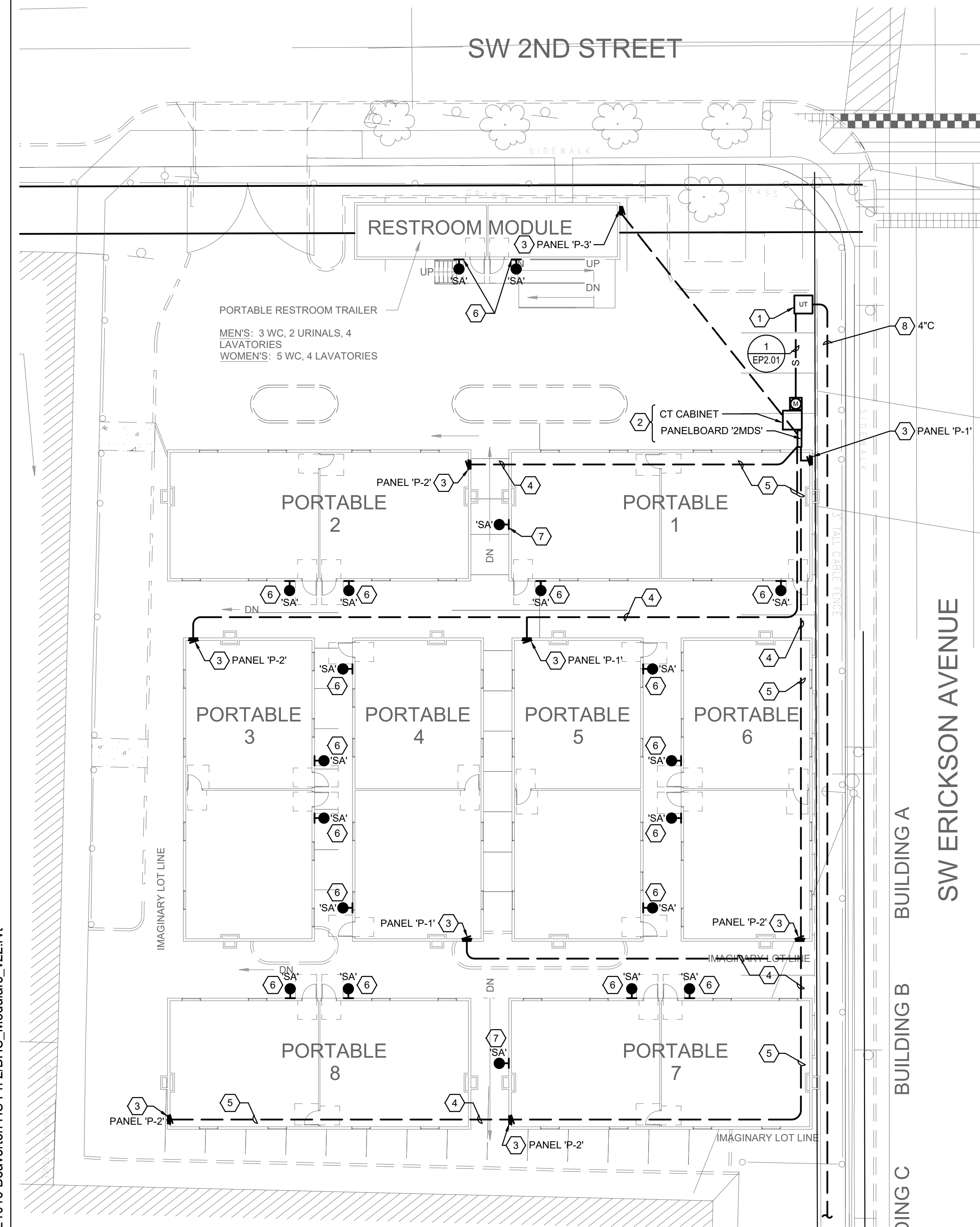
T 503-356-4500



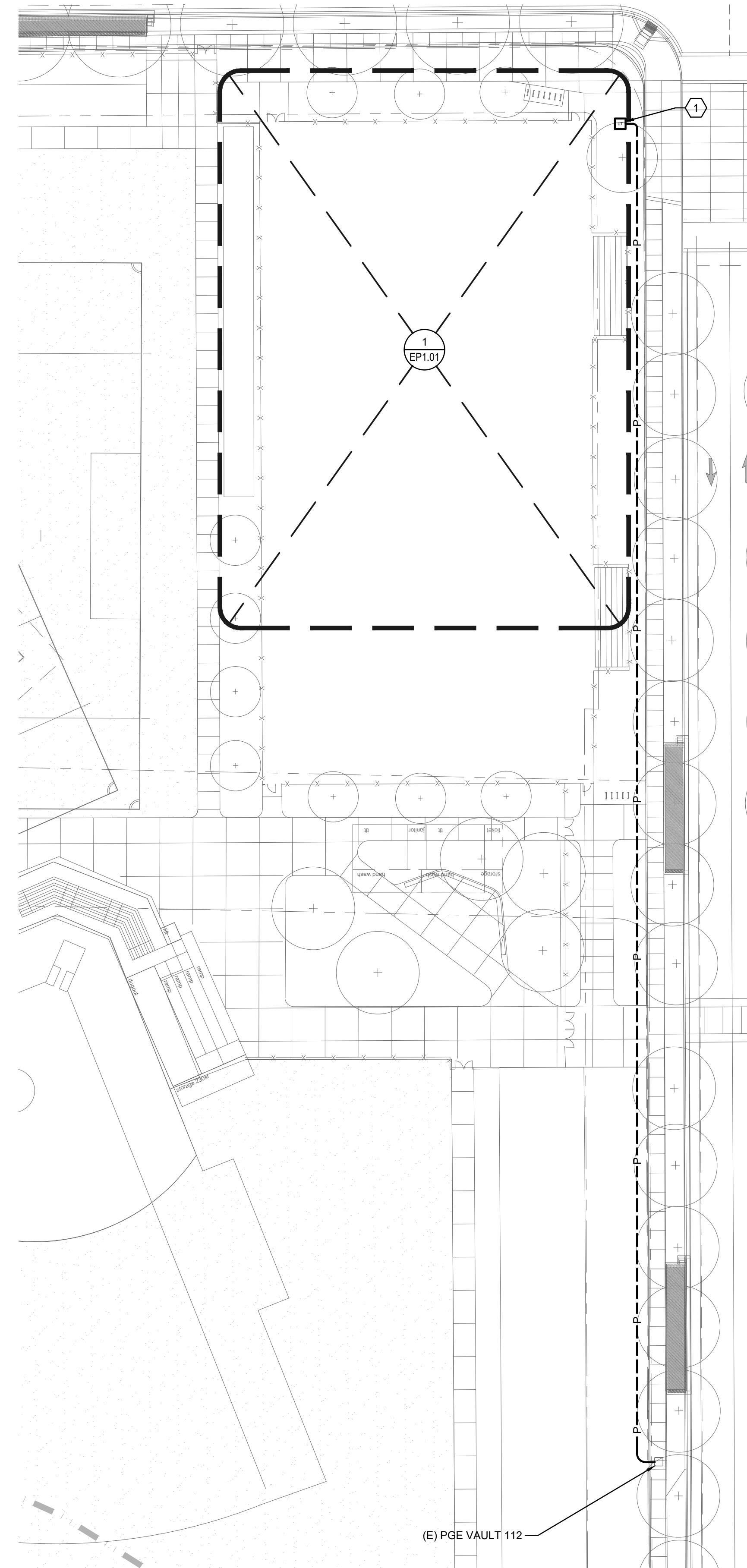
revisions	

phase	PERMIT
date	3/15/2023
project	21016
SITE PLAN ELECTRICAL	

EP1.01



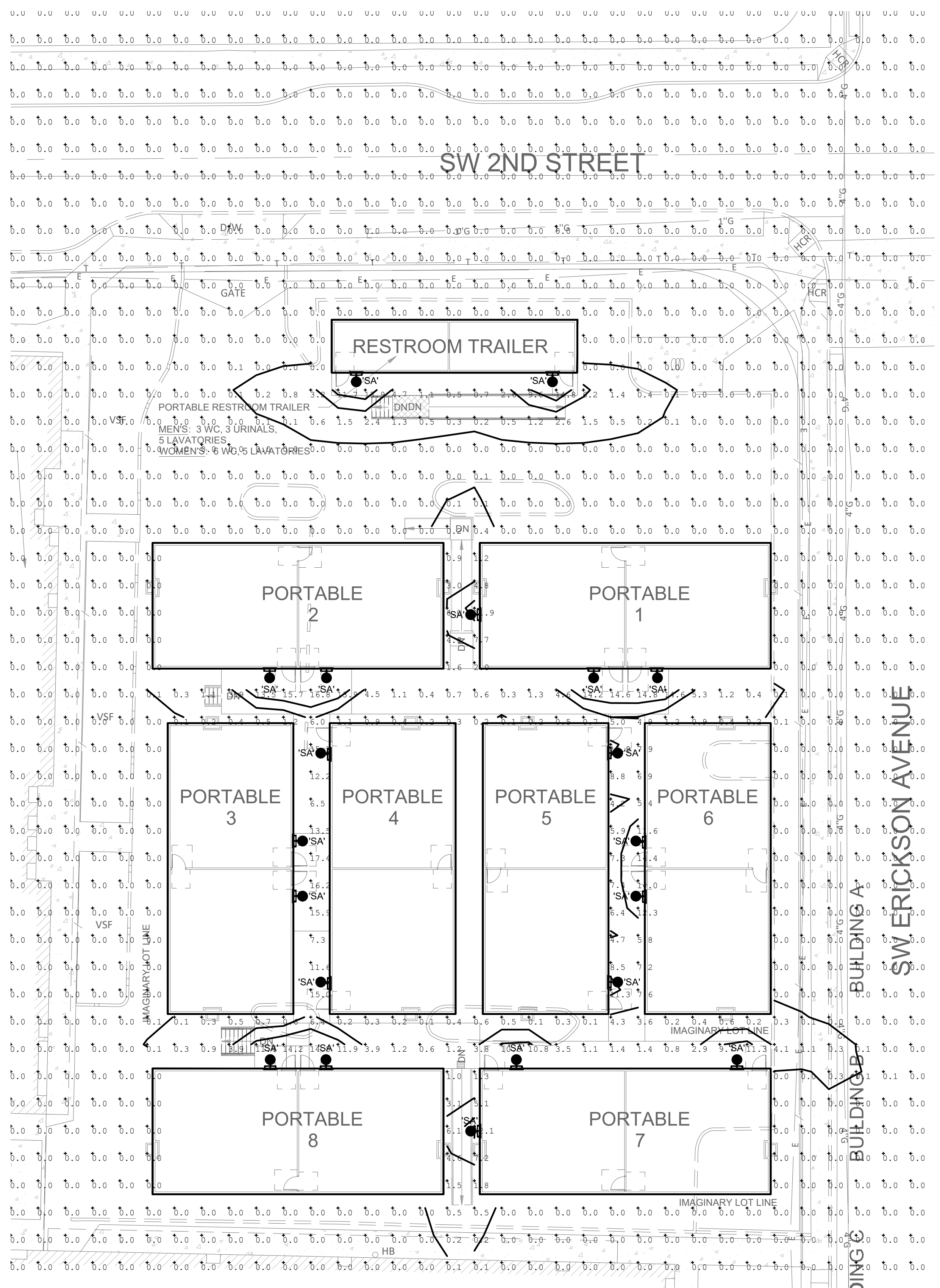
1 PORTABLE BUILDINGS SITE PLAN - ELECTRICAL
 SCALE: 1/16"=1'-0"



2 ENLARGED PLAN - ELECTRICAL
 SCALE: 1"=30'-0"

3/3/2023 3:09:42 PM Autodesk Docs/121016 Beaverton HS Ph 2/BHS_Modulars_v22.rvt

Calculation Summary							
Label	CalcType	Units	Avg	Max	Min	Avg/Min	Max/Min
Portables	Illuminance	Fc	0.31	17.4	0.0	N.A.	N.A.



1 PORTABLE BUILDINGS AREA - PHOTOMETRICS

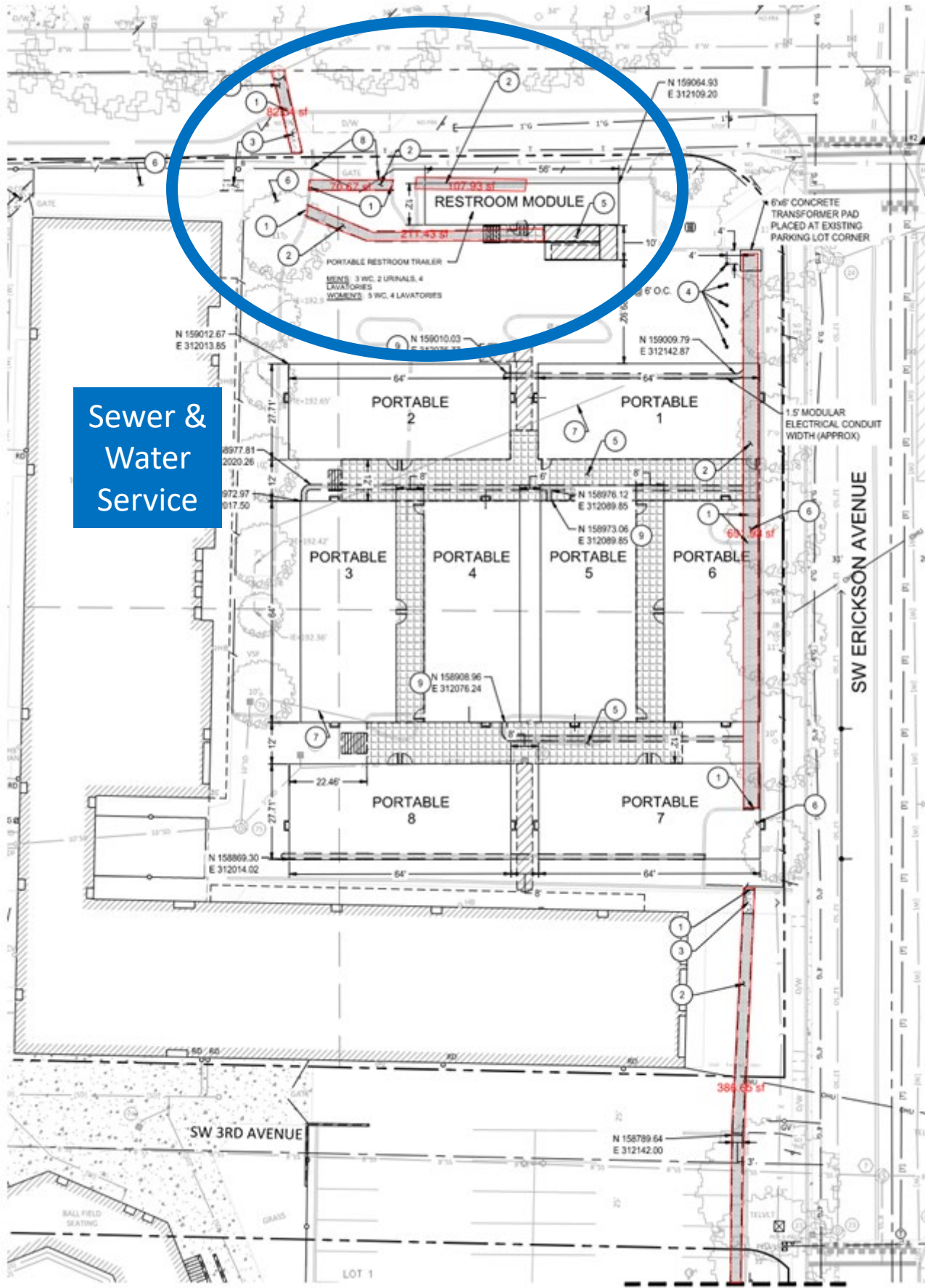
0 8 16 32
SCALE: 1/16"=1'-0"

3/3/2023 3:09:42 PM Autodesk Docs://z1016 Beaverton HS Ph 2/BHS_Modulars_v22.rvt



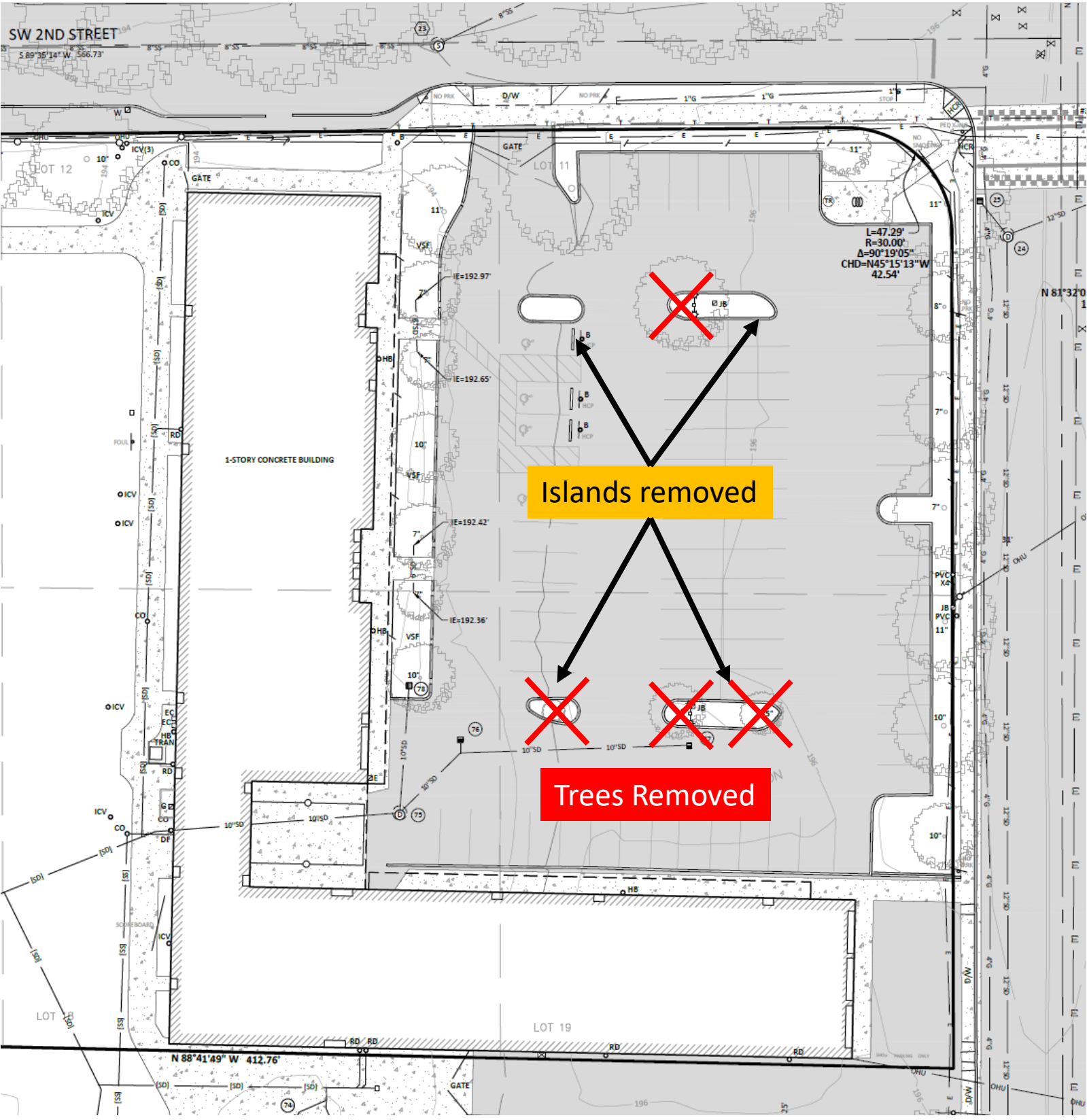
revisions	

phase	PERMIT SET
date	4/20/2023
project	21016
PORTABLE BUILDINGS PHOTOMETRICS	



Sewer & Water Service

MATCHLINE SEE VIEWPORT RIGHT



Islands removed

Trees Removed

L=47.29'
R=30.00'
 $\Delta=90^{\circ}19'05''$
CHD=N45°15'13"W
42.54'

1-STORY CONCRETE BUILDING

SW 2ND STREET

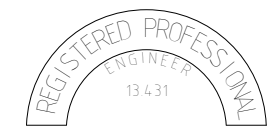
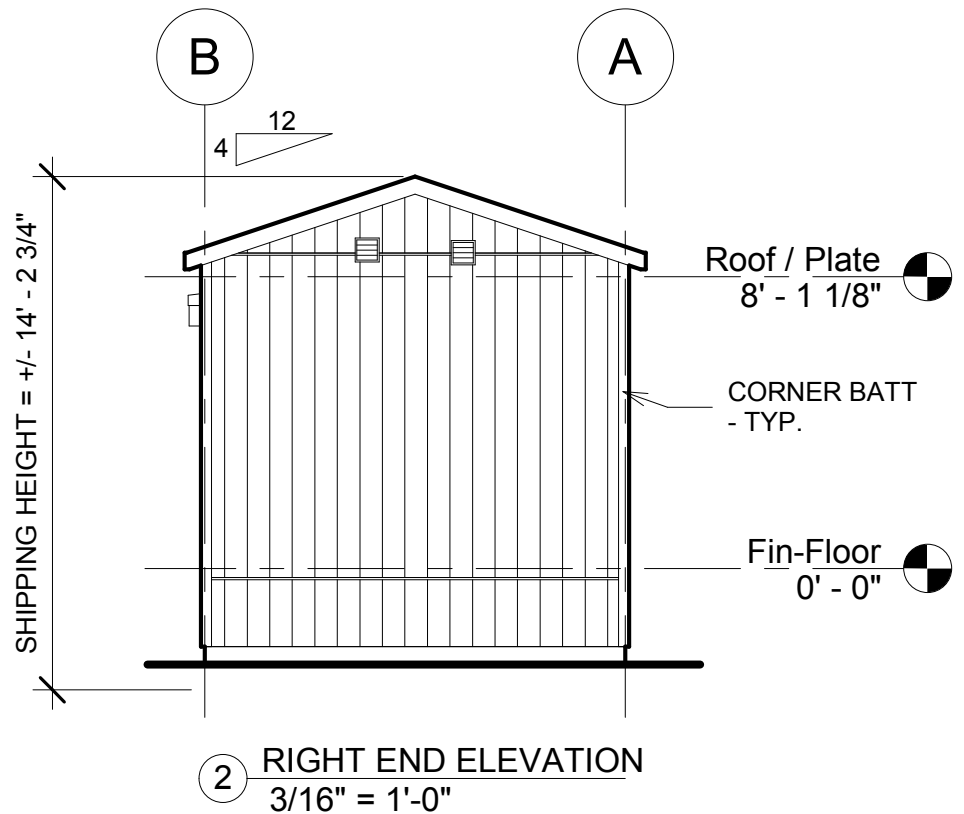
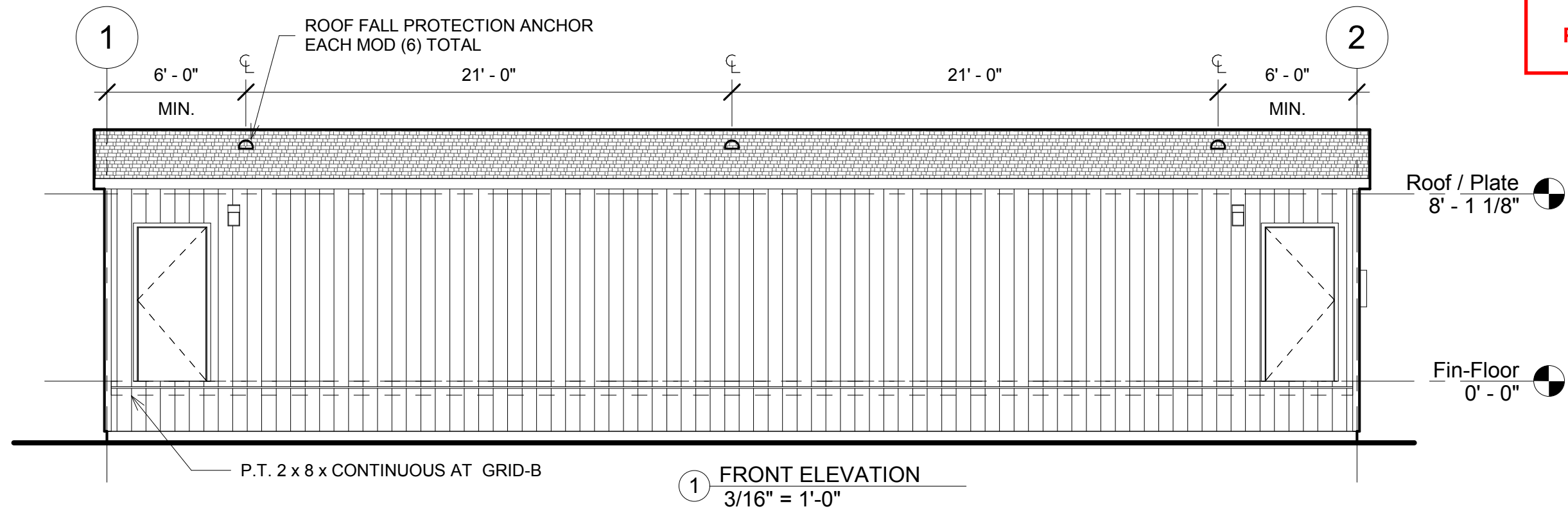
LOT 12

LOT 19

N 88°41'49" W 412.76'

N 81°32'0" E

Received
 Planning Division
 05/17/2023



EXPIRES: 12/31/20

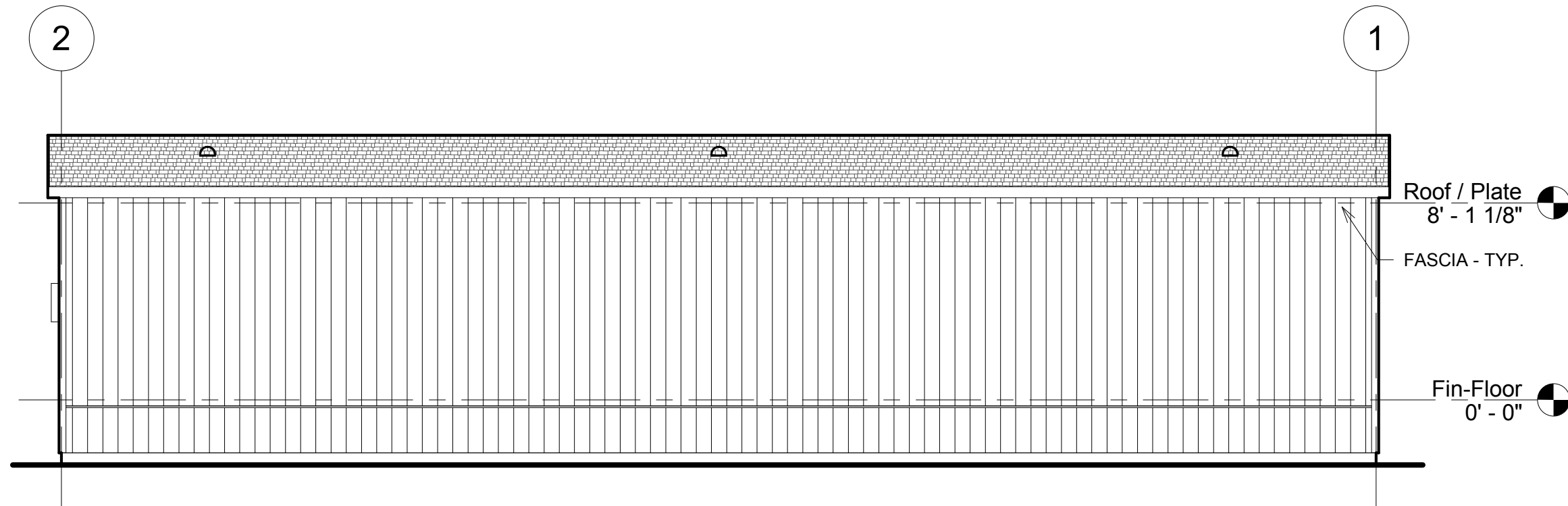
REV.	DESCRIPTION	DATE	BY

REUSE OF DOCUMENTS THIS DOCUMENT AND THE IDEAS AND DESIGNS INCORPORATED HEREIN ARE THE PROPERTY OF MODERN BUILDING SYSTEMS INC. AND ARE NOT TO BE USED IN WHOLE OR IN PART FOR ANY OTHER USE OR PROJECT WITHOUT WRITTEN AUTHORIZATION.

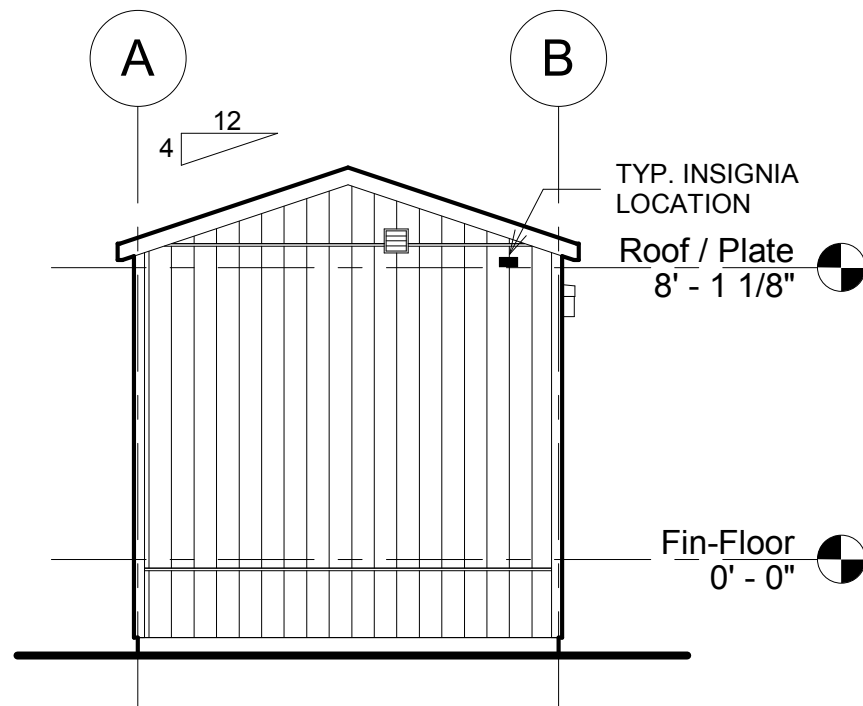
MODERN BUILDING SYSTEMS
 MODERN BUILDING SYSTEMS, INC.
 TELEPHONE: (503) 749-4949 FAX: (503) 749-4950
 P.O. BOX 110, 9493 PORTER ROAD, AUMSVILLE, OR 97325
 CHECK OUT OUR WEB PAGE: www.modernbuildingsystems.com
 © MODERN BUILDING SYSTEMS, INC. 2018

SHEET **EXTERIOR ELEVATIONS**
 PROJ. **12' x 54' MOBILE RESTROOM PRINEVILLE R.R.'S**
 ADDRESS 735 SW CONNECT WAY, PRINEVILLE, OR 97754

JOB# 2019-AR-02
 DMP: 2016 12x54 BASE
 SHEET # **A 2.0**
 DATE 12/5/18



1 REAR ELEVATION
3/16" = 1'-0"



2 LEFT END ELEVATION
3/16" = 1'-0"



REV.	DESCRIPTION	DATE	BY

REUSE OF DOCUMENTS THIS DOCUMENT AND THE IDEAS AND DESIGNS INCORPORATED HEREIN ARE THE PROPERTY OF MODERN BUILDING SYSTEMS INC. AND ARE NOT TO BE USED IN WHOLE OR IN PART FOR ANY OTHER USE OR PROJECT WITHOUT WRITTEN AUTHORIZATION.

MODERN BUILDING SYSTEMS
 MODERN BUILDING SYSTEMS, INC.
 TELEPHONE: (503) 749-4949 FAX: (503) 749-4950
 P.O. BOX 110, 9493 PORTER ROAD, AUMSVILLE, OR 97325
 CHECK OUT OUR WEB PAGE: www.modernbuildingsystems.com
 © MODERN BUILDING SYSTEMS, INC. 2018

SHEET **EXTERIOR ELEVATIONS**
 PROJ. **12' x 54' MOBILE RESTROOM PRINEVILLE R.R.'S**
 ADDRESS **735 SW CONNECT WAY, PRINEVILLE, OR 97754**
 DRW **TS**

JOB# **2019-AR-02**
 DMP: 2016 12x54 BASE
 SHEET # **A 2.1**
 DATE **12/5/18**



MODERN
BUILDING SYSTEMS
800-682-1422
ModernBuildingSystems.com

2565

12X54